



Powerful electrical CAD

Zuken's E³.series puts complexity into perspective by providing the structure for a methodical, flexible design approach, while guaranteeing reliable, high quality results that will last throughout the product lifespan.

To see how E³.series can help you, visit www.zuken.com/e3series and check out our range of resources:

- Movies – including 'Get back to making cool stuff' – a short and entertaining overview of E³.series
- Brochures for E³.series Industry Editions
- Datasheets for E³.series Options
- Webinars

Electrical wiring, control systems and fluid engineering design

Electrical CAD software has come of age with Zuken's E³.series. This modular tool meets and exceeds the demands placed on it by a variety of disciplines and industries for:

- Design and documentation of wire harnesses and cable assemblies
- Design and documentation of control systems and panel layouts
- Fluid design for hydraulic and pneumatic systems

E³.series supports the entire product process from definition and design, through manufacturing and maintenance. Its unique object-oriented architecture ensures all stages of the design are fully synchronized.

Multi-view project file

Projects contain all aspects of your design – schematics, cable plans, control panels, formboards and fluid detail. These are dynamically linked; a change in one is automatically reflected in all.

Real-time design rule checks (DRC)

Designed by electrical engineers for electrical engineers with built in real-time DRCs. Prevent errors rather than find them later.

MCAD integration

Collaborative design for harness and fluid engineering offering integration with major MCAD vendors.

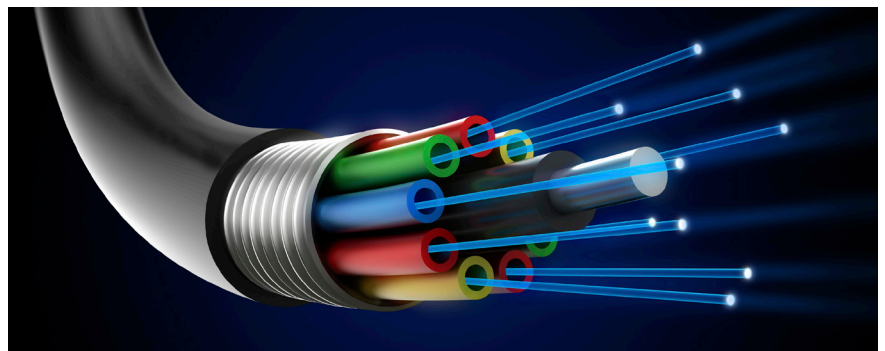
PDM/PLM integration

Use your own data management solution or integrate with major PDM/PLM vendors. Stable and proven technology, used by thousands globally.

Industry Editions

E³.series has specially configured electrical design suites to meet the needs of key industries including:

- | | | |
|--------------|-----------|--|
| • Aerospace | • Power | • Off-highway and Special Purpose Vehicles |
| • Automotive | • Railway | |
| • Machinery | • Systems | |



About Zuken

The Challenge.

More quality, more functionality, in less time, with less cost; it's a common story in today's market place.

The increased competition and requirement to operate on a global scale make these end-user demands ever more challenging to meet. So companies need to be innovative and dynamic to stay one step ahead of the game – this is where Zuken can help.

What we do.

Zuken is a global provider of leading-edge software and consulting services for electrical and electronic design and manufacturing. Founded in 1976, Zuken has the longest track record of technological innovation and financial stability in the EDA and ECAD software industry.

The company's extensive experience, technological expertise and agility, combine to create world-class software solutions. Zuken's transparent working practices and integrity in all aspects of business produce long-lasting and successful customer partnerships that make Zuken a reliable long-term business partner.

Security of Solid Foundations.

Zuken is focused on being a long-term innovation and growth partner. The security of choosing Zuken is further reinforced by the company's people – the foundation of Zuken's success. Coming from a wide range of industry sectors, specializing in many different disciplines and advanced technologies, Zuken's people relate to and understand each company's unique requirements.

For more information about the company and its products, visit www.zuken.com.

E³.series Options include

E³.cable

Provides enhanced functionality for designing cables and cable harnesses. Different views of the design enable specific documents to be created for production, start-up and service.

E³.eCheck

Identifies errors at the development stage and avoids costly iterations. It automatically ensures the schematic is functionally accurate and that wires and fuses are within the acceptable tolerances.

E³.fluid

Integrated design solution for hydraulics, pneumatics, cooling and lubrication systems. Supports integrated electrical and fluid design.

E³.formboard

Creates build-to-print detailed 1:1 harness designs; linked dynamically to E³.cable drawings.

E³.Harness Flattening

Flatten 3D geometric harness data exported from supported MCAD systems. Prepare the flattened harness structure for importing into E³.formboard where manufacturing detail is completed.

E³.panel

For general arrangement drawings of cabinet enclosures. Work in either 2D or 3D, place devices, cable ducts and mounting rails and prepare panels for manufacture.

E³.Revision Management

Document all physical and graphical changes between design iterations. Automatically produce engineering change order documentation.

E³.3D Routing Bridge

Transfer wire, cable and cable harness information to 3D MCAD systems. After routing, the individual wire lengths can be transferred back to E³.series.

E³.schematic

The core module of the E³.series suite enables the creation of schematic diagrams for electrical control systems.

E³.topology

Evaluate system harnesses early in the design flow for factors such as length, weight and cost. Enables tradeoff analysis of harnesses and sub-harnesses to optimize manufacturing performance and cost.

E³.redliner

Markup documents in a protected read-only copy of the design. Playback and jump to all recommended changes in the master design.

E³.view

View all E³.series projects and special viewer files with this free-of-charge viewer.

Get Connected with Us!



/CIMTechnologiesInc.ph



/in/yourcimt



/yourCIMT

Makati (main office)

706 SEDCCO 1 Building, 120 Rada cor. Legaspi Sts.,
Legaspi Village, Makati City, Philippines 1229

☎ +63 (2) 752-2468 📠 +63 (2) 752-2470

Cebu Office

11/F AppleOne-Equicom Tower Mindanao Ave. Cor.
Biliran Rd. Cebu Business Park, Cebu City 6000

☎ +63 (32) 230-4779 📠 +63 (32) 230-4701



www.cimtechnologies.com

